



MAZDA
MX-5 CUP

Welcome



Race Director Team:

Jaap Molmans
Bobbe Veldkamp / Kees Koning
Annemieke Veldkamp / Arie Kroeze

Stewards:

Gerard du Pre / Luc Gommers
Herman ter Beek/ Paul van Houtum (adjunct)

Secretary of the meeting

Alfred Hoven

Team Relations:

Eric de Jongh

Promotor:

Renata Aartsen
Dick van Elk



Digital Notice Board

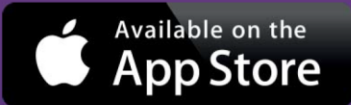


Sportity

For direct event information please download the Sportity app and insert this password:

Mazda2022 VRM2022

Time schedule V5

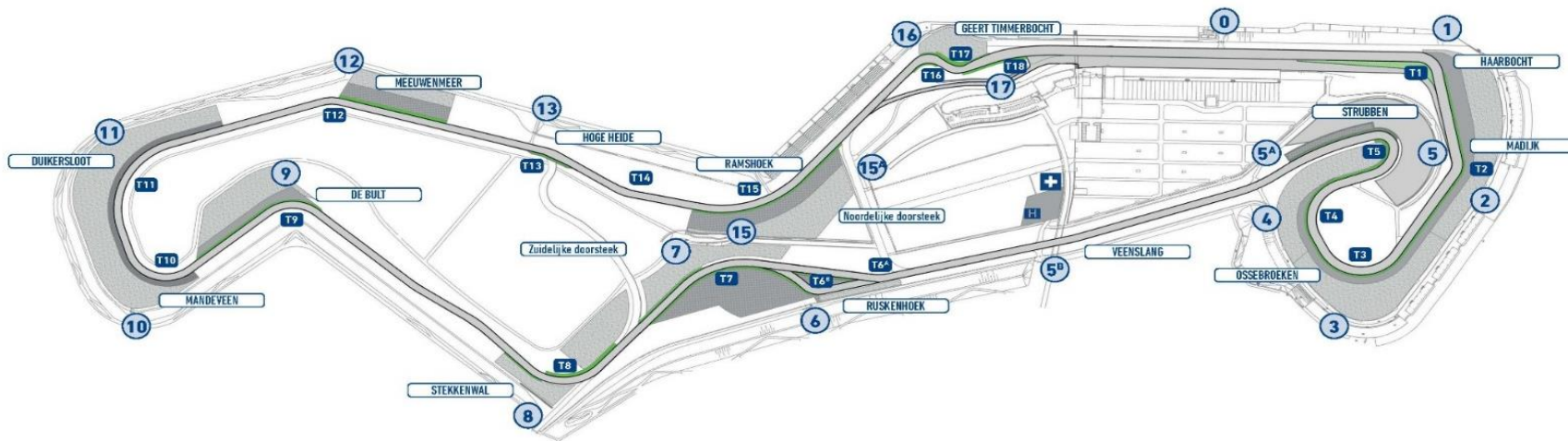


Review Euroraces Spa



- Virtual Safety Car
- Red Flag Procedures / Start Abort
- Fuel (max Octaan 98) / Parc Ferme return camera's
- Feedback from your side?

The Circuit

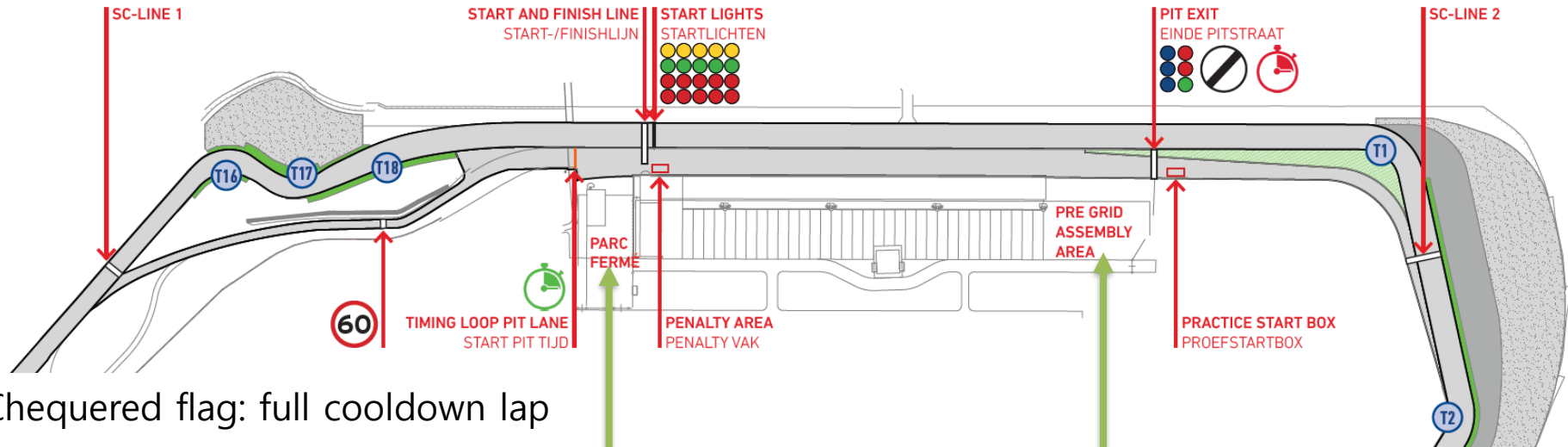


Circuit Assen

- Length: **4.555** meter
- Direction: **Clockwise**
- Start: **Standing start**
- Pole Position: **Left Side**
- Practice starts: **Pit-Exit**
- Penalty Area: **Underneath Podium,**
- Pitlane Speed: **60 KM/H**



Logistics



- Chequered flag: full cooldown lap
- Race: 3 cars to the podium pushed back

Off Track /
Parc Ferme

On Track

All cars must be at the pre-start area **20 min. before** the official session starting time



To the grid (shortcut)



Pit in:



First detection point on the line



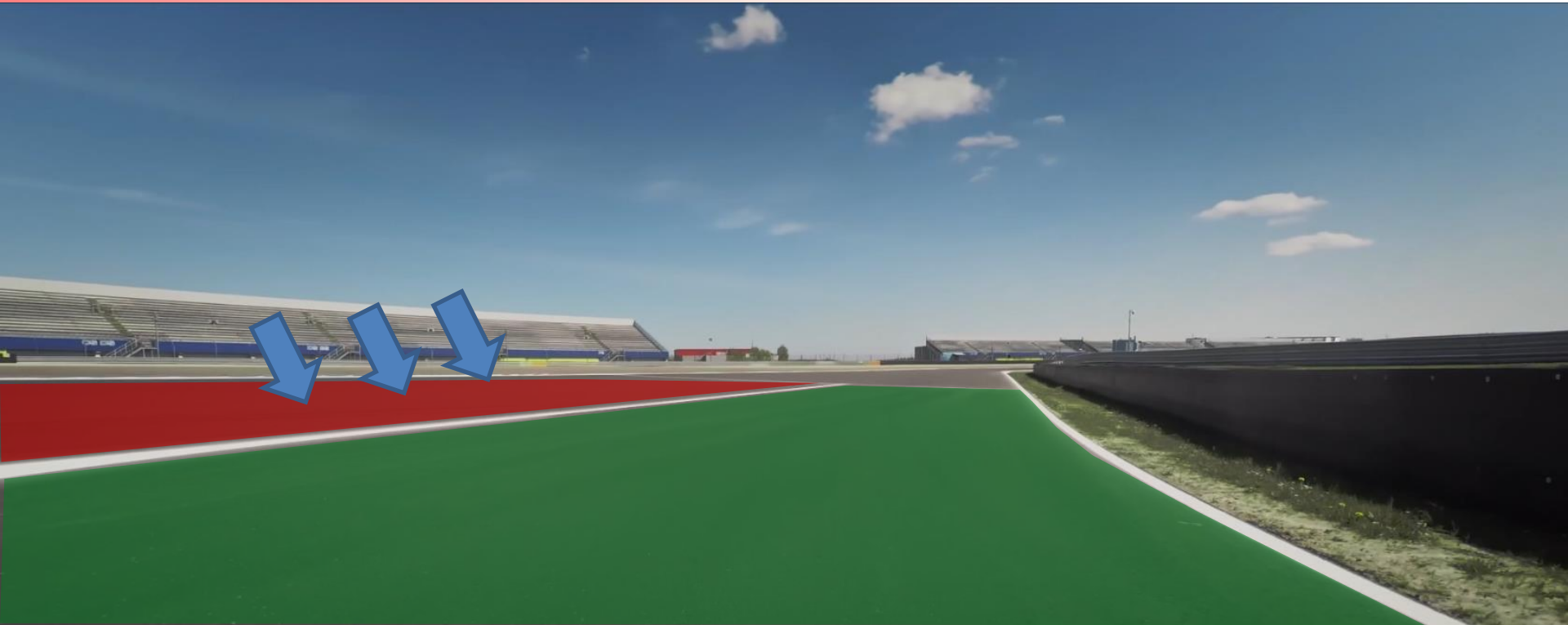
Pit out



Practice starts area



White Line Pit Exit

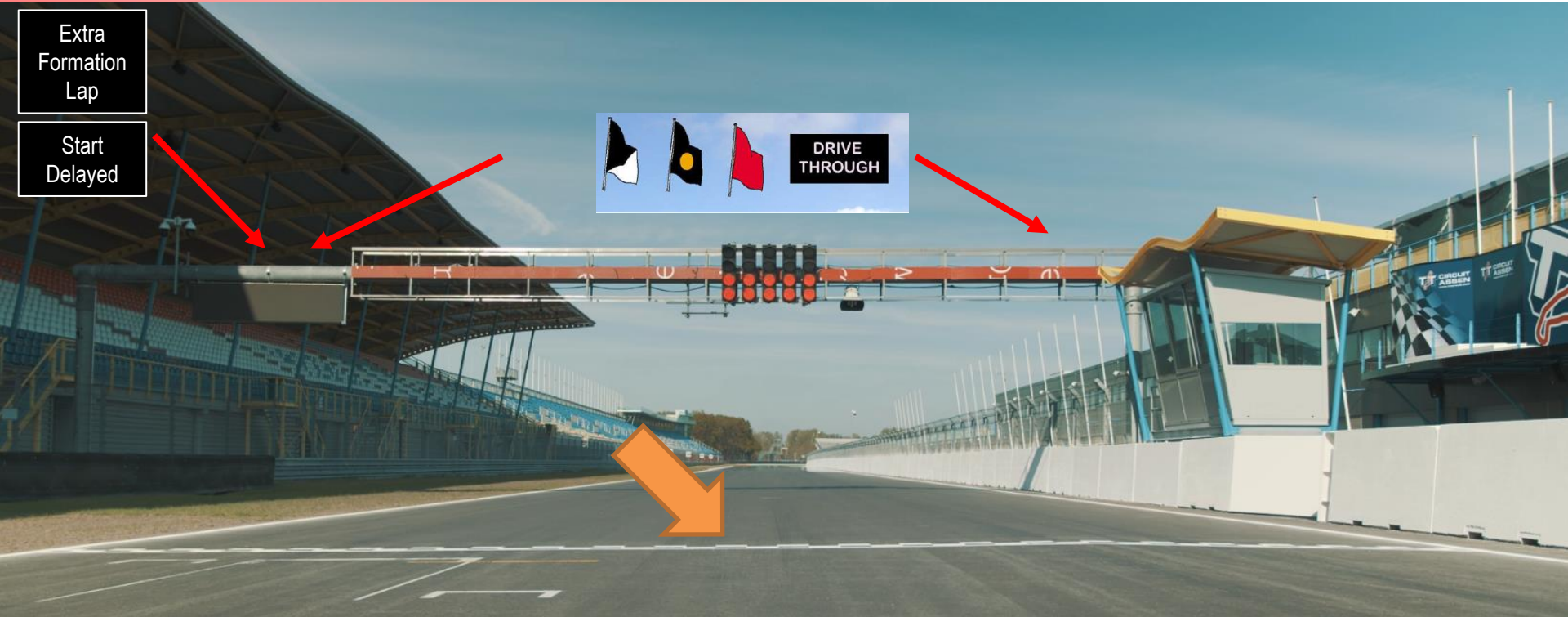


Finish Control Line | Signalling Area



Extra
Formation
Lap

Start
Delayed



Penalty Box



- Technical Flag (Meatball)



- Black Flag



~~- Warning Flag~~

Basics – Starting Procedure



- Know your grid position
- No tyre trolleys on the grid
- Wait for the warm-up lap to start (green flag & green lights in gantry)
- Grand prix start

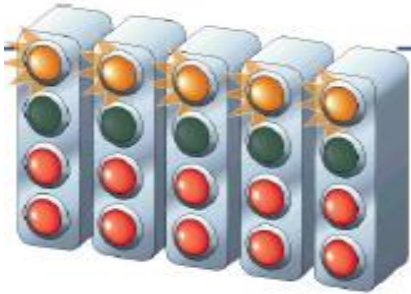


Start delayed



- In the occasion of problems on the grid or during the formation lap, the Race Director may decide **not** to start the race.

The start will be aborted.



- In this case, the red lights on the starting gantry remains red and orange lights will flash.
- The sign **Start Delayed** will be displayed
- A new formation lap will follow, when the green lights on the gantry have been activated. **NO START OF THE RACE**

DIGIFLAGS



Flags and Digiflags have the same meaning

In case of contradicting flags: the safety flags go first

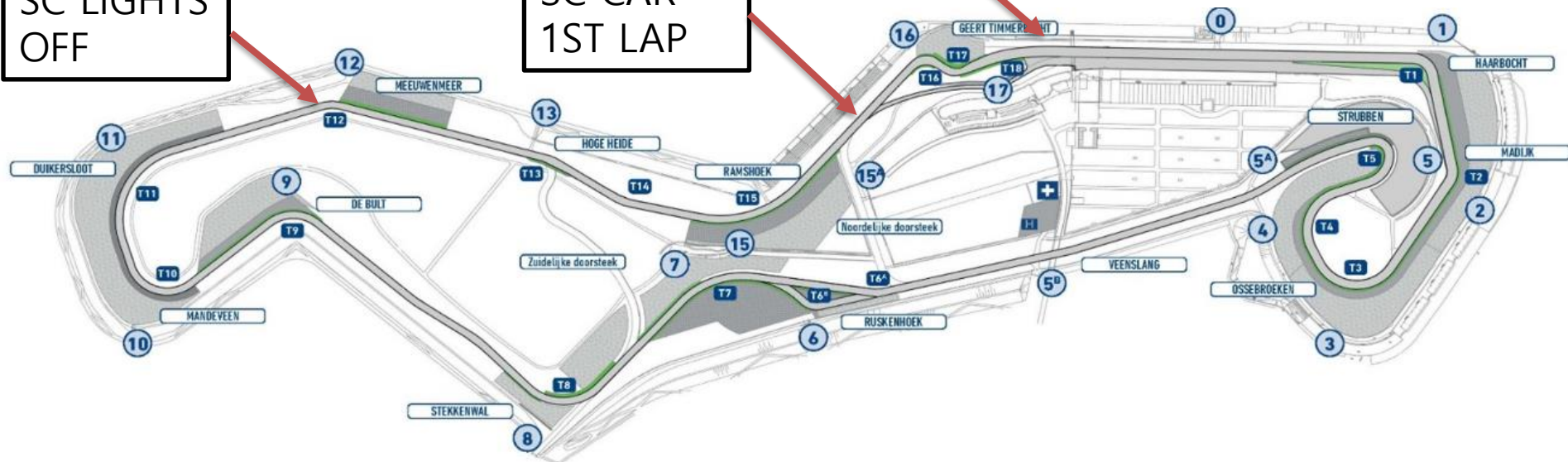
Safety car + VSC



SC CAR
POSITION

SC LIGHTS
OFF

SC CAR
1ST LAP



SAFETY CAR PROCEDURE
YELLOW FLAGS + BOARDS "SC"
NO OVERTAKING
WATCH OUT FOR INTERVENTION VEHICLES
RESTART FROM THE CONTROL LINE
OVERTAKING AFTER THE CONTROL LINE

SAFETY CAR ENDING
RESTART FROM THE CONTROL LINE
1 single waved green flag
OVERTAKING ALLOWED AFTER THE CONTROL LINE





START OF THE VSC PROCEDURE

ON THE DIGIFLAGS "VSC" + YELLOW FLAGS
NO OVERTAKING + 80 KPH FOR THE LEADER
WATCH OUT FOR INTERVENTION VEHICLES

ENDING OF THE VSC PROCEDURE

DIGIFLAGS OFF: RESTART BETWEEN 5 AND 10 SEC
LEADER IS ALLOWED TO SPEED UP
Overtaking is not allowed until the LED panels DISPLAY green
DIGIFLAGS GREEN: RESTART. OVERTAKING IMMEDIATELY ALLOWED

Full Course Yellow FCY



yellow flags are shown –
reduce the speed and be prepared to
change direction.

Slow down to 80 km/h
Overtaking is forbidden

Flag Signals – Red Flag



- Reduce Speed. Be Prepared to Stop!
- Session is Suspended
- Follow Marshall's Instructions

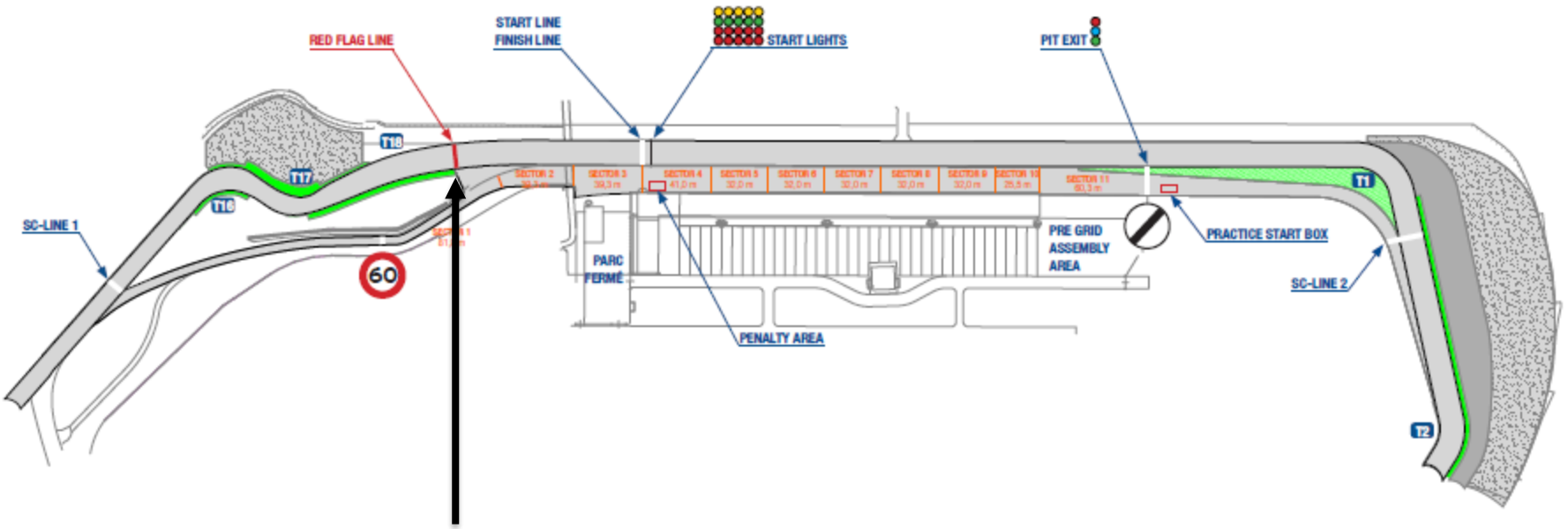
Free Practice & Qualifying

All cars into pitlane

Race

All cars in 1 line before the redflag line

Red flag line



Track limits



In accordance with the rules of the FIA International Sporting Code – Appendix L, the **white lines define the track edges**

Drivers must use the track at all times and **may not leave the track without a justifiable reason**. For the avoidance of doubt, the white lines defining the track edges are considered to be part of the track but the kerbs are not.

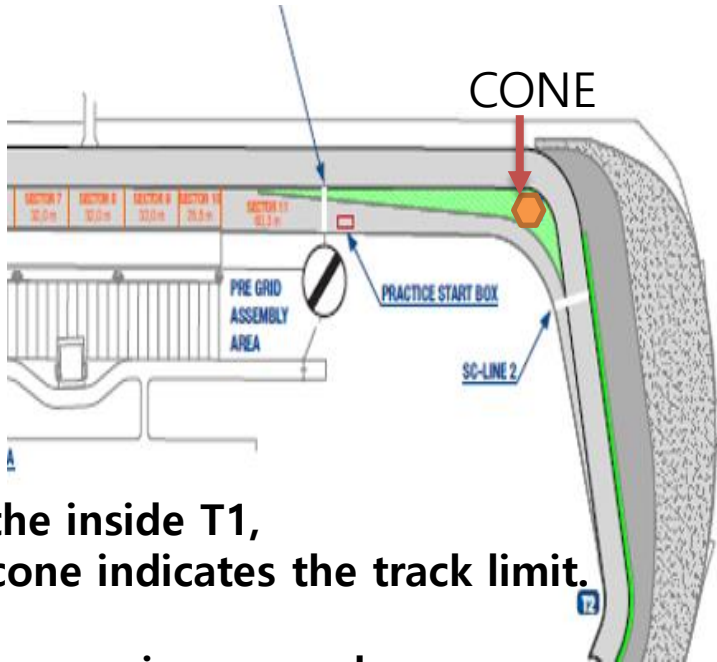
Should a car leave the track for any reason, the driver may rejoin.

However, this may only be done when it is **safe to do so and without gaining any lasting advantage**. A driver will be judged to have left the track if no part of the car remains in contact with the track.

Track Limits T1



Track limit after red-white-blue curb



**For the inside T1,
the cone indicates the track limit.**

**If the cone is removed,
Appendix L applies.**



Track Limits T6/T7



The cones indicate the track limits.
If the cones are removed, Appendix L applies.



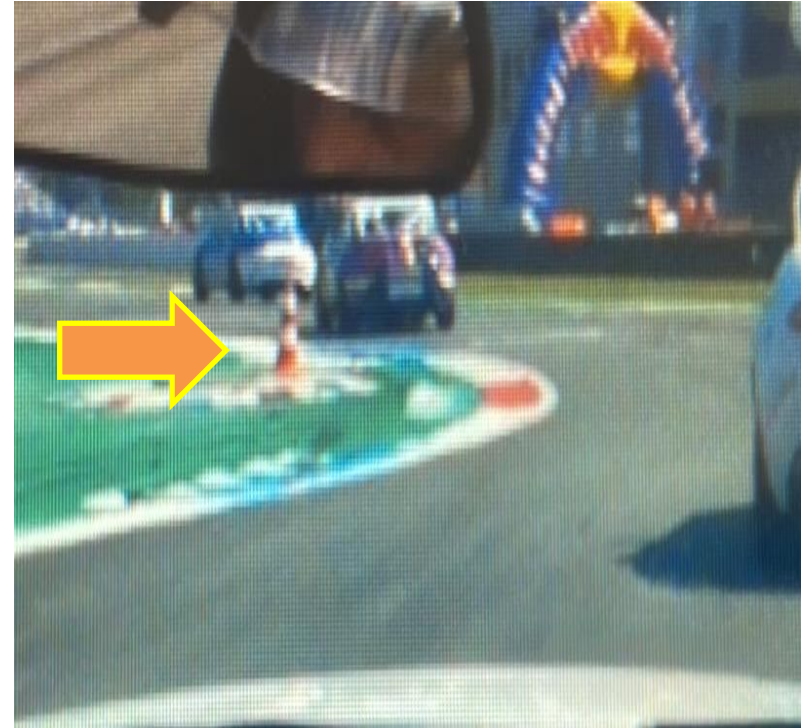
Route at T6/T7



Drivers must stay on the left side of the **WHITE** line, and merge in safely and without any advantage



Track Limits T15/T16



The cones indicate the track limits.
If the cones are removed, Appendix L applies.



Safety – Stopping on Track



- An orange armco means an opening in the guardrail.
- It's a safe place to park your car after a technical defect

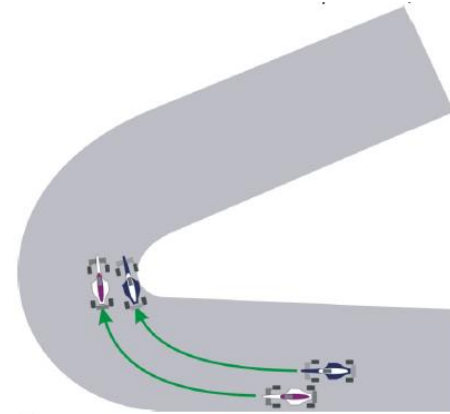
Driving Conduct



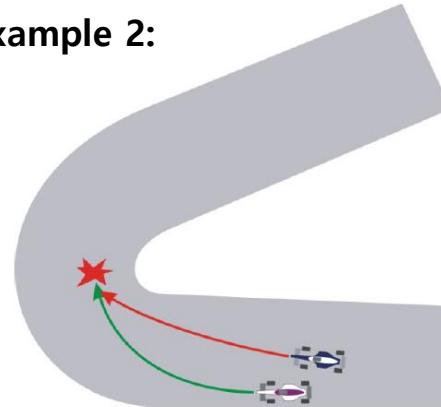
A penalty may be applied if (causing a collision)

- The inside car overshoots the corner and crashes in the outside car (goes too fast and causes a collision)(example 2)
- The outside car does not leave space for the inside car. The Outside Car must leave at least one car width space inside, allowing the attempt to pass
- (example 3)

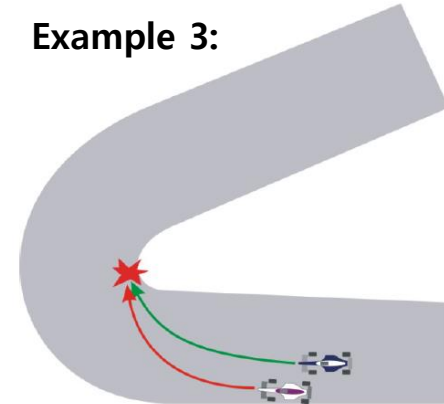
Example 1:



Example 2:



Example 3:



Driving Conduct



Examples

- Jumpstart
- Ignoring flag signals or Instructions from marshals
- Overtaking under yellow, red or after chequered flag
- Speeding under FCY, Pit lane, Yellow.
- Dangerous driving behaviour with or without contact
- Unsportsmanlike behaviour
- Change direction more than once
- Take advantage of an unclear situation
- Track limits

Driving Conduct



Penalties will be applied based on a fixed penalty list

- Deleting (fastest) lap time(s)
- Time penalty
- Position penalty
- Grid penalty
- Starting from pitlane
- Drive through
- Stop and Go
- Stewards decisions

Penalty can come with extra point(s) on your licence:

- | | |
|-----------|---|
| 5 Points | drop of 3 places on the grid next race |
| 8 Points | drop of 10 places on the grid next race |
| 10 Points | Start from pit lane next race |



QUESTIONS? MAKE IT A GREAT WEEKEND!

SAFETY – RESPECT - SPORTSMANSHIP